

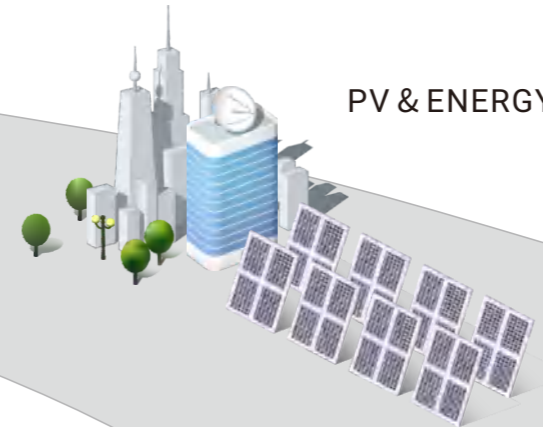
INDUSTRY



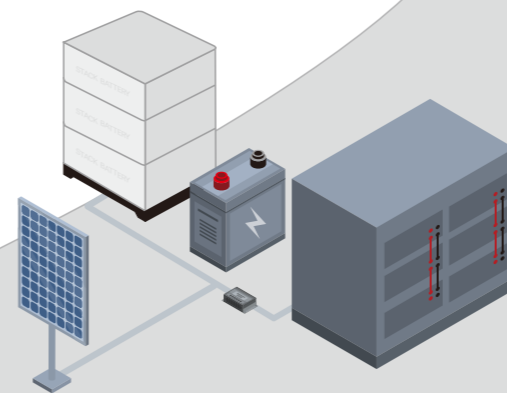
PV OFF-GRID SYSTEM



PV & ENERGY STORAGE SYSTEM



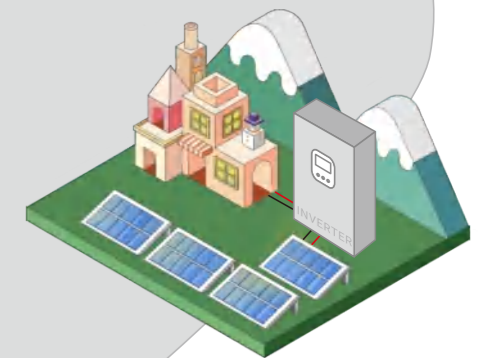
LITHIUM BATTERY PACK



PORTABLE MOBILE POWER SUPPLY



SOLAR INVERTER



INDUSTRIAL & COMMERCIAL ENERGY STORAGE



Power grid



UPS



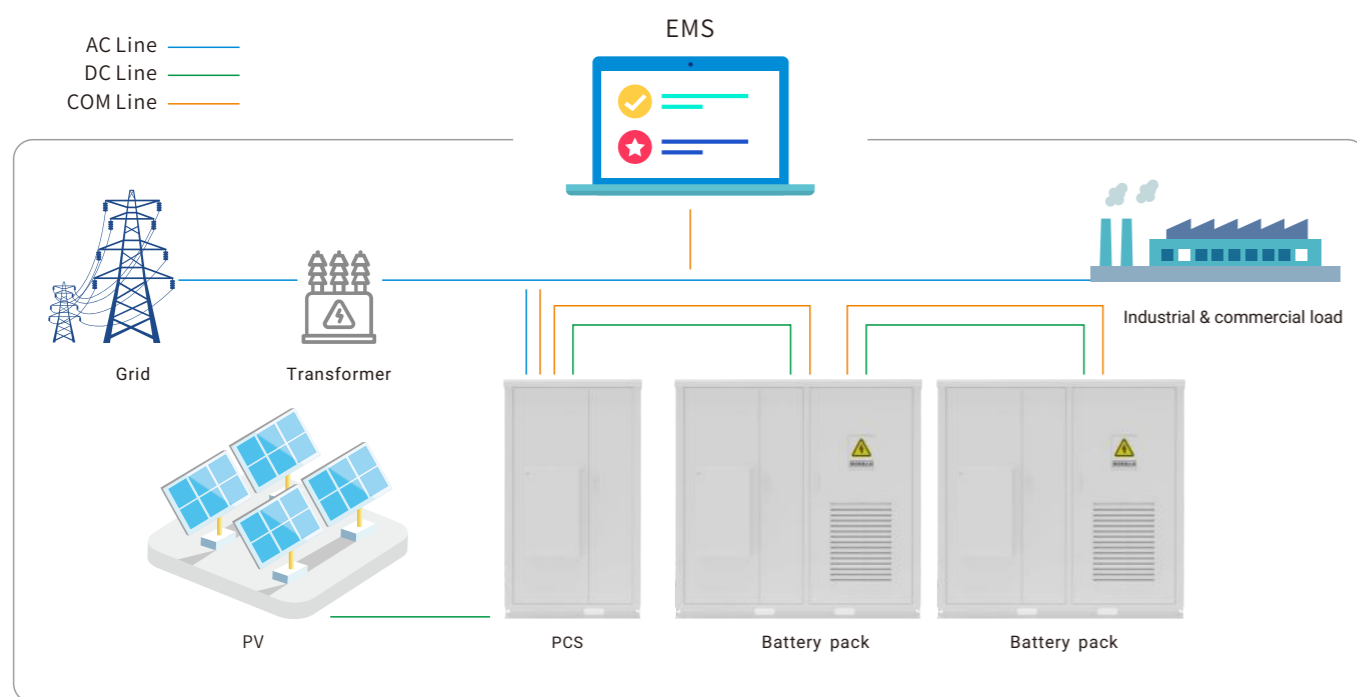
Intelligent control



Energy saving



Green power



Technical Parameters

Cell parameters			
Cell type	Lithium iron phosphate(LFP) 280Ah		
Rated voltage	3.2V		
Depth of discharge	Deep discharge 90%		
Installed capacity			
Rated power	215KWh	604.8KWh	1MWh
Battery rated voltage	768V	720V	720V
Battery voltage range	600V-876V	560V-820V	560V-820V
DC discharge current	140A	140A	140A
Single Cluster Battery Pack	16S1P	15S1P	15S1P
Number of battery	15PCS (15S)	45PCS (15S3P)	75PCS (15S5P)
AC Side			
Rated power	100KW	300KW	500KW
Rated grid voltage	400V		
Rated AC current	140A		
Allowable voltage range	360V~440V		
Rated grid frequency	50Hz/60Hz		
Power Factor	>0.99		
AC access method	3W+N+PE		
System parameters			
System efficiency	>86%		
Cycle life	>6000(25°C 0.5C >90%DOD 70%EOL)		
Cooling method	Air Cooling		
Allowable ambient temp.	-30~50°C		
Maximum working altitude	4000m(>2000mDerating is required)		
Fire mode	Heptafluoropropane gas fire extinguishing device		
Degree of protection	IP54		
Communication method	RS485/CAN		
Operating mode	Microgrid, UPS, Backup power		

Vertical Energy Storage Lithium Battery



Thin mode



More power



Communication



OEM/ODM



Household energy storage products use high-quality square aluminum shell lithium iron phosphate cells, with intelligent battery management system(BMS), Long cycle life, High safety performance, Beautiful appearance, Free combination, and convenient installation.

The battery pack is equipped with LCD display for visualization of operating data. Compatible with most brands solar inverter and be able to communicate with it. It is widely used in distributed PV systems and home energy storage systems. Provide efficient and clean energy for household, industrial, commercial, agricultural and other electrical equipment.

Technical Parameters

Model	L48100	
Specification	48V100Ah	51.2V100Ah
Combination	15S1P	16S1P
Capacity	4.8KWh	5.12KWh
Standard discharge current	50A	50A
Max. discharge current	100A	100A
Working voltage range	40.5-54VDC	43.2-57.6VDC
Standard Voltage	48VDC	51.2VDC
Max. charging current	50A	50A
Max. charging voltage	54V	57.6V
Cycle	3000~6000cycles @DOD 80%/25°C/0.5C	
Working humidity	65±20%RH	
Operating temperature	-10~+50°C	
Working altitude	≤2500m	
Cooling method	Natural cooling	
Installation	Stack installation	
Protection level	IP20	
Max of parallel	15PCS	
Warranty	5~10 Years	
Communication	Default: RS485/RS232/CAN Optional: WiFi/4G/Bluetooth	
Certified	CE ROHS FCC UN38.3 MSDS	
Product Size	400*200*460mm	
Package Size	460*230*545mm	
Net weight	50kg	53kg
Gross weight	55kg	58kg

*Voltage, capacity, size/color customization, OEM/ODM services can be provided according to customer needs



LOW VOLTAGE PROTECTION



OVER VOLTAGE PROTECTION



OVER CURRENT PROTECTION



OVER TEMPERATURE PROTECTION



BALANCED PROTECTION



OVER DISCHARGE PROTECTION



SHORT CIRCUIT PROTECTION

Rack/Cabinet Energy Storage Lithium Battery



Cabinet series adopts high-quality lithium iron phosphate batteries, equipped with intelligent BMS battery management system, long cycle life, high safety performance, beautiful appearance, free combination and convenient installation. LCD display, visualization of battery operating data. Compatible with most solar inverters, providing efficient energy for photovoltaic off-grid households, commercial and other electrical equipment.

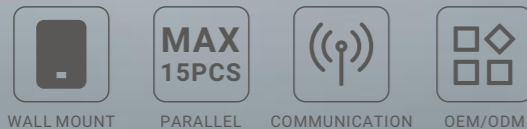
Model	4850		48100		48200	
Specification	48V50Ah	51.2V50Ah	48V100Ah	51.2V100Ah	48V200Ah	51.2V200Ah
Combination	15S1P	16S1P	15S1P	16S1P	15S1P	16S1P
Capacity	2.4KWh	2.56KWh	4.8KWh	5.12KWh	9.6KWh	10.24KWh
Standard discharge current	50A	50A	50A	50A	50A	50A
Max. discharge current	100A	100A	100A	100A	100A	100A
Working voltage range	40.5-54VDC	43.2-57.6VDC	40.5-54VDC	43.2-57.6VDC	40.5-54VDC	43.2-57.6VDC
Standard Voltage	48VDC	51.2VDC	48VDC	51.2VDC	48VDC	51.2VDC
Max. charging current	50A	50A	50A	50A	100A	100A
Max. charging voltage	54V	57.6V	54V	57.6V	54V	57.6V
Cycle	3000~6000cycles @DOD 80%/25°C/0.5C					
Working humidity	65±20%RH					
Operating temperature	-10~+50°C					
Working altitude	≤2500m					
Cooling method	Natural cooling					
Installation	Cabinet/Rack Mount					
Protection level	IP20					
Max of parallel	15PCS					
Warranty	5~10 Years					
Communication	Default: RS485/RS232/CAN Optional: WiFi/4G/Bluetooth					
Certified	CE ROHS FCC UN38.3 MSDS					
Product Size	440*495*88mm		440*495*178mm		440*590*178mm	
Package Size	555*500*130mm		555*500*235mm		480*650*220mm	
Net weight	25kg	37kg	41kg	45kg	101kg	105kg
Gross weight	30kg	42kg	49kg	55kg	111kg	115kg

*Voltage, capacity, size/color customization, OEM/ODM services can be provided according to customer needs





Wall mount Energy Storage Lithium Battery



WALL MOUNT PARALLEL COMMUNICATION OEM/ODM

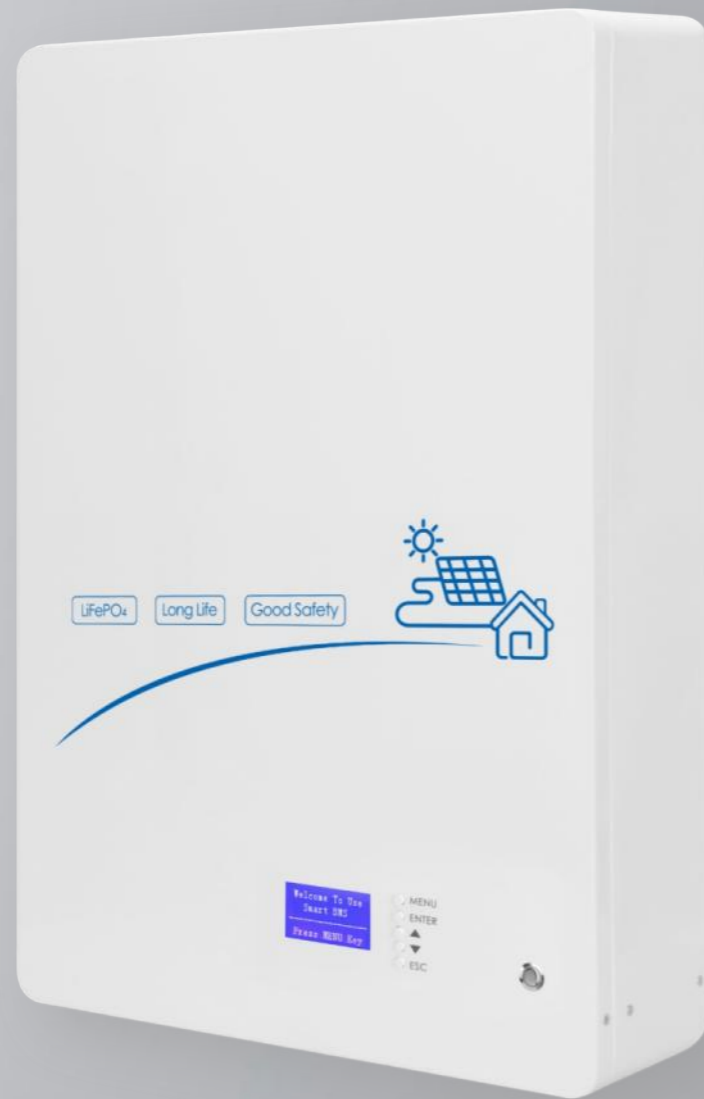
Wall mount series adopts high-quality lithium iron phosphate batteries, equipped with intelligent BMS battery management system, long cycle life, high safety performance, beautiful appearance, free combination and convenient installation. LCD display, visualization of battery operating data. Compatible with most solar inverters, providing efficient energy for photovoltaic off-grid households, commercial and other electrical equipment.

Model	4850		48100		48200	
	48V50Ah	51.2V50Ah	48V100Ah	51.2V100Ah	48V200Ah	51.2V200Ah
Specification	48V50Ah	51.2V50Ah	48V100Ah	51.2V100Ah	48V200Ah	51.2V200Ah
Combination	15S1P	16S1P	15S1P	16S1P	15S1P	16S1P
Capacity	2.4KWh	2.56KWh	4.8KWh	5.12KWh	9.6KWh	10.24KWh
Standard discharge current	50A	50A	50A	50A	50A	50A
Max. discharge current	100A	100A	100A	100A	100A	100A
Working voltage range	40.5-54VDC	43.2-57.6VDC	40.5-54VDC	43.2-57.6VDC	40.5-54VDC	43.2-57.6VDC
Standard Voltage	48VDC	51.2VDC	48VDC	51.2VDC	48VDC	51.2VDC
Max. charging current	50A	50A	50A	50A	100A	100A
Max. charging voltage	54V	57.6V	54V	57.6V	54V	57.6V
Cycle	3000~6000cycles @DOD 80%/25°C/0.5C					
Working humidity	65±20%RH					
Operating temperature	-10~+50°C					
Working altitude	≤2500m					
Cooling method	Natural cooling					
Installation	Wall mount					
Protection level	IP20					
Max of parallel	15PCS					
Warranty	5~10 Years					
Communication	Default: RS485/RS232/CAN Optional: WiFi/4G/Bluetooth					
Certified	CE ROHS FCC UN38.3 MSDS					
Product Size	400*200*585mm		400*230*585mm		400*230*610mm	
Package Size	500*260*630mm		500*290*630mm		460*250*650mm	
Net weight	35kg	40kg	42kg	46kg	102kg	106kg
Gross weight	40kg	45kg	50kg	54kg	112kg	116kg

*Voltage, capacity, size/color customization, OEM/ODM services can be provided according to customer needs



LOW VOLTAGE PROTECTION OVER VOLTAGE PROTECTION OVER CURRENT PROTECTION OVER TEMPERATURE PROTECTION BALANCED PROTECTION OVER DISCHARGE PROTECTION SHORT CIRCUIT PROTECTION



Wall mount series adopts high-quality lithium iron phosphate batteries, equipped with intelligent BMS battery management system, long cycle life, high safety performance, beautiful appearance, free combination and convenient installation. LCD display, visualization of battery operating data. Compatible with most solar inverters, providing efficient energy for photovoltaic off-grid households, commercial and other electrical equipment.

Model	4850		48100		48200	
Specification	48V50Ah	51.2V50Ah	48V100Ah	51.2V100Ah	48V200Ah	51.2V200Ah
Combination	15S1P	16S1P	15S1P	16S1P	15S1P	16S1P
Capacity	2.4KWh	2.56KWh	4.8KWh	5.12KWh	9.6KWh	10.24KWh
Standard discharge current	50A	50A	50A	50A	50A	50A
Max. discharge current	100A	100A	100A	100A	100A	100A
Working voltage range	40.5-54VDC	43.2-57.6VDC	40.5-54VDC	43.2-57.6VDC	40.5-54VDC	43.2-57.6VDC
Standard Voltage	48VDC	51.2VDC	48VDC	51.2VDC	48VDC	51.2VDC
Max. charging current	50A	50A	50A	50A	100A	100A
Max. charging voltage	54V	57.6V	54V	57.6V	54V	57.6V
Cycle	3000~6000cycles @DOD 80%/25°C/0.5C					
Working humidity	65±20%RH					
Operating temperature	-10~+50°C					
Working altitude	≤2500m					
Cooling method	Natural cooling					
Installation	Wall mount					
Protection level	IP20					
Max of parallel	15PCS					
Warranty	5~10 Years					
Communication	Default: RS485/RS232/CAN Optional: WiFi/4G/Bluetooth					
Certified	CE ROHS FCC UN38.3 MSDS					
Product Size	400*200*585mm		400*230*585mm		400*230*610mm	
Package Size	500*260*630mm		500*290*630mm		460*250*650mm	
Net weight	35kg	40kg	42kg	46kg	102kg	106kg
Gross weight	40kg	45kg	50kg	54kg	112kg	116kg

*Voltage, capacity, size/color customization, OEM/ODM services can be provided according to customer needs

Wall mount Energy Storage Lithium Battery



WALL MOUNT PARALLEL COMMUNICATION OEM/ODM



LOW VOLTAGE PROTECTION OVER VOLTAGE PROTECTION OVER CURRENT PROTECTION OVER TEMPERATURE PROTECTION BALANCED PROTECTION OVER DISCHARGE PROTECTION SHORT CIRCUIT PROTECTION

Stacked Energy Storage Lithium Battery

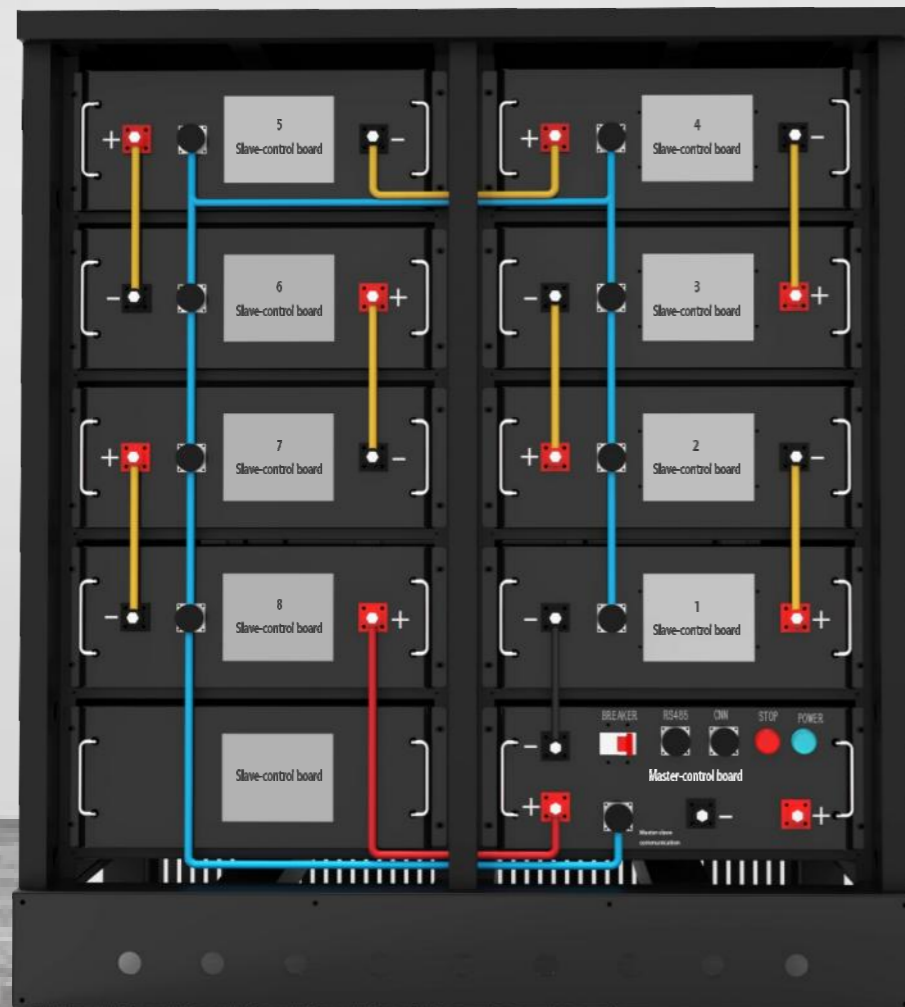


Model	48100		48200	
Specification	48V100Ah	51.2V100Ah	48V200Ah	51.2V200Ah
Combination	15S1P	16S1P	15S1P	16S1P
Capacity	4.8KWh	5.12KWh	9.6KWh	10.24KWh
Standard discharge current	50A	50A	50A	50A
Max. discharge current	100A	100A	100A	100A
Working voltage range	40.5-54VDC	43.2-57.6VDC	40.5-54VDC	43.2-57.6VDC
Standard Voltage	48VDC	51.2VDC	48VDC	51.2VDC
Max. charging current	50A	50A	100A	100A
Max. charging voltage	54V	57.6V	54V	57.6V
Cycle	3000~6000cycles @DOD 80%/25°C/0.5C			
Working humidity	65±20%RH			
Operating temperature	-10~+50°C			
Working altitude	≤2500m			
Cooling method	Natural cooling			
Installation	Stack installation			
Protection level	IP20			
Max of parallel	15PCS			
Warranty	5~10 Years			
Communication	Default: RS485/RS232/CAN Optional: WiFi/4G/Bluetooth			
Certified	CE ROHS FCC UN38.3 MSDS			
Product Size	400*200*460mm		400*240*460mm	
Package Size	460*230*545mm		460*270*545mm	
Net weight	50kg	53kg	102kg	106kg
Gross weight	55kg	58kg	112kg	116kg

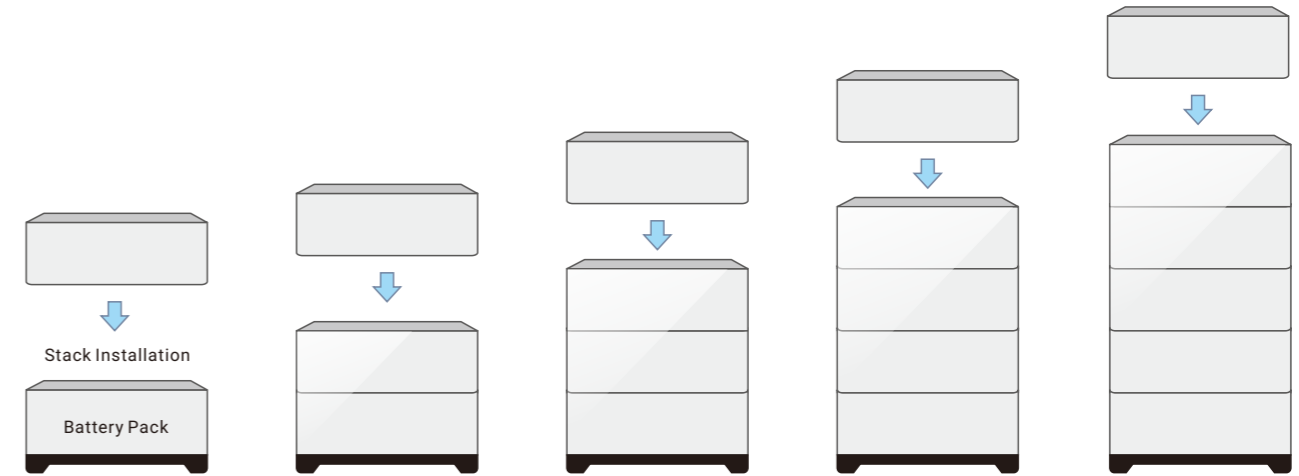
*Voltage, capacity, size/color customization, OEM/ODM services can be provided according to customer needs

High voltage Energy storage lithium battery

96/144/192/240/384/512/768V



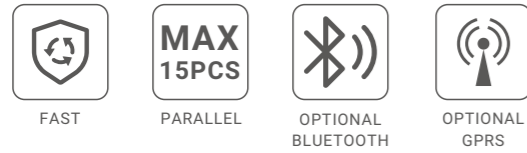
High voltage solution supports custom stack form factors



Model	H96	H144	H192	H240	H384	H512	H768
Specification	96V100AH	144V100AH	192V100AH	240V100AH	384V100AH	512V100AH	768V100AH
Capacity	9.6KWh	14.4KWh	19.2KWh	24KWh	38.4KWh	51.2KWh	76.8KWh
Standard discharge current	50A~300A(Customer customize)						
Max discharge current	50A~500A(Customer customize)						
Working voltage range	81-108VDC	121.5-162VDC	162-216VDC	202.5-270VDC	324-432VDC	432-576VDC	648-864VDC
Standard voltage	96V	144V	192V	240V	384V	512V	768V
Max charging current	100A~500A(Customer customize)						
Max charging voltage	81~864V						
Cycle	3000~6000 Cycles @DOD 80%/25°C/0.5C						
Working humidity	65±20%RH						
Operating temperature	-10~+50°C						
Working altitude	≤2500m						
Cooling method	Natural cooling						
Installation	Cabinet/Rack Mount/Stack installation						
Protection level	IP20						
Max of parallel	15PCS						
Warranty	5~10Years						
Communication	Default: RS485/RS232/CAN Optional: WiFi/4G/Bluetooth						
Certified	CE ROHS FCC UN38.3 MSDS						

*Voltage, capacity, size/color customization, OEM/ODM services can be provided according to customer needs

Replace GEL battery Energy Storage Lithium Battery



This series adopts high-quality lithium iron phosphate batteries, equipped with intelligent BMS battery management system, long cycle life, high safety performance, beautiful appearance, free combination and convenient installation. LCD display, visualization of battery operating data. Compatible with most solar inverters, providing efficient energy for photovoltaic off-grid households, commercial and other electrical equipment.

Specification	12V5AH	12V8AH	12V10AH	12V20AH	12V30AH	12V50AH
Capacity	75Wh	102Wh	128Wh	256Wh	384Wh	640Wh
Standard discharge current	2.5A	4A	5A	10A	15A	25A
Max. discharge current	5A	8A	10A	20A	30A	50A
Working voltage range	10-14.6V	10-14.6V	10-14.6V	10-14.6V	10-14.6V	10-14.6V
Standard Voltage	12.8V	12.8V	12.8V	12.8V	12.8V	12.8V
Max. charging voltage	14.6V	14.6V	14.6V	14.6V	14.6V	14.6V
Cycle	3000~6000 cycles@DOD 80%/25°C/0.5C					
Working humidity	65±20%RH					
Operating temperature	-10~+50°C					
Working altitude	≤2500m					
Cooling method	Natural cooling					
Installation	IP65					
Product Size	152*65*98mm	152*65*98mm	152*65*98mm	265*70*90mm	265*70*90mm	255*165*215mm
Net weight	0.9Kg	1.2Kg	1.5Kg	3.2Kg	4.5Kg	9Kg

Specification	12V100AH	12V200AH	12V300AH	24V50AH	24V100AH	24V200AH
Capacity	1.28KWh	2.56KWh	3.84KWh	1.28KWh	2.56KWh	5.12KWh
Standard discharge current	50A	50A	50A	25A	50A	50A
Max. discharge current	100A	100A	100A	50A	100A	100A
Working voltage range	10-14.6V	10-14.6V	10-14.6V	20-29.2V	20-29.2V	20-29.2V
Standard Voltage	12.8V	12.8V	12.8V	25.6V	25.6V	25.6V
Max. charging voltage	14.6V	14.6V	14.6V	29.2V	29.2V	29.2V
Cycle	3000~6000 cycles@DOD 80%/25°C/0.5C					
Working humidity	65±20%RH					
Operating temperature	-10~+50°C					
Working altitude	≤2500m					
Cooling method	Natural cooling					
Installation	IP65					
Product Size	255*165*215mm	480*165*240mm	515*235*225mm	305*165*215mm	480*165*240mm	635*245*220mm
Net weight	16Kg	28Kg	45Kg	20Kg	30Kg	40Kg

L-ESS

Vertical Lithium Battery Energy Storage System



Li-FePO₄



3-8KW
Out put



APP
Control



Customized
High/low voltage



Customized
capacity



Home ESS

ZHEJIANG DINGKE ENERGY TECHNOLOGY CO., LTD

The ESS series product (Energy Storage System) is a high-performance off-grid energy storage system independently developed by us. It uses high-quality lithium iron phosphate batteries and is equipped with an intelligent BMS battery management system. It has long cycle life, high safety performance, and good sealing; High-frequency off-grid photovoltaic inverter, built-in MPPT controller, can provide efficient and reliable energy solutions for photovoltaic off-grid power generation systems, energy storage systems, household photovoltaic storage systems, and industrial and commercial energy storage systems.

The system is equipped with a self-developed APP, supports IOS/Android mobile phones, remotely controls the charging and discharging of the battery pack, monitors the system operating data in real time, and quickly enters the troubleshooting work when the system fails, so as to restore the effective power supply more efficiently.

Model	L-ESS-10	L-ESS-15	L-ESS-20
Capacity	10.24KWh/5KW	15.36KWh/5KW	20.48KWh/5KW
Standard discharge current	50A	50A	50A
Max. discharge current	100A	100A	100A
Working voltage range	43.2-57.6VDC	43.2-57.6VDC	43.2-57.6VDC
Standard Voltage	51.2VDC	51.2VDC	51.2VDC
Max. charging current	50A	50A	50A
Max. charging voltage	57.6V	57.6V	57.6V
Rated PV input voltage	360VDC		
MPPT tracking voltage range	120V-450V		
Max input voltage (VOC) at lowest temperature	500V		
Max input power	6000W		
Number of MPPT tracking paths	1Path		
DC input voltage range	42-60VDC		
Rated mains power input voltage	220VAC/230VAC/240VAC		
Grid power input voltage range	170VAC~280VAC (UPS mode) / 120VAC~280VAC (Inverter mode)		
Grid input frequency range	45Hz~55Hz (50Hz); 55Hz~65Hz (60Hz)		
Inverter output efficiency	94%(MAX)		
Inverter output voltage	220VAC±2%/230VAC±2%/240VAC±2%(Inverter mode)		
Inverter output frequency	50Hz±0.5 or 60Hz±0.5(Inverter mode)		
Inverter output waveform	Pure sine wave		
Grid output efficiency	>99%		
Max mains charging current	60A		
Max PV charging current	100A		
Max charging current (Grid+PV)	100A		
Optional mode	Grid priority/PV priority/Battery priority		
Warranty	5~10Years		
Communication	Optional: RS485/RS232/CAN WiFi/4G/Bluetooth		

*Voltage, capacity, size/color customization, OEM/ODM services can be provided according to customer needs

ESS

Rack/Cabinet Lithium Battery Energy Storage System



Li-FePO₄



3-8KW
Out put



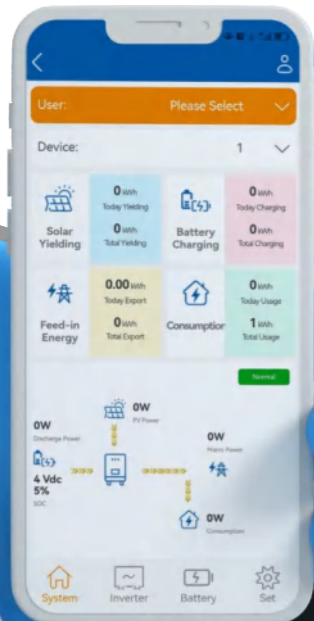
APP
Control



Customized
High/Low voltage



Customized
capacity



The ESS system is a high-performance off-grid energy storage system independently developed by Dingke Energy. It uses high-quality lithium iron phosphate cells and is equipped with an intelligent BMS battery management system. It has long cycle life, high safety performance, good sealing, and is equipped with high-frequency off-grid the inverter, built-in MPPT controller, provides efficient and reliable energy solutions for PV off-grid power generation systems, homes PV storage systems, and industrial and commercial energy storage systems.

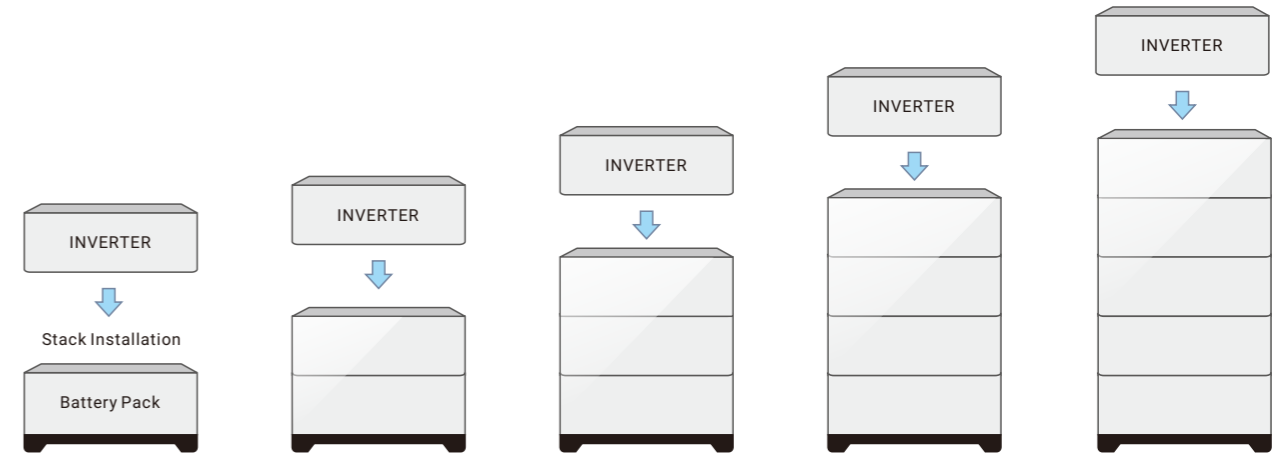
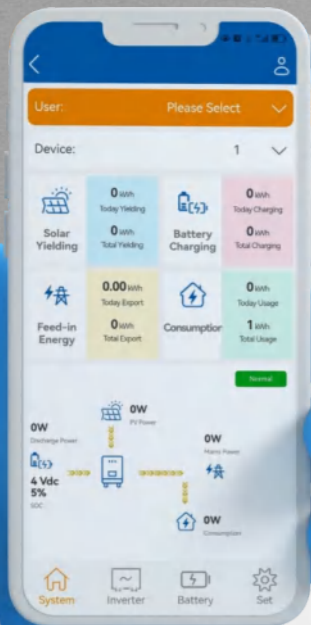
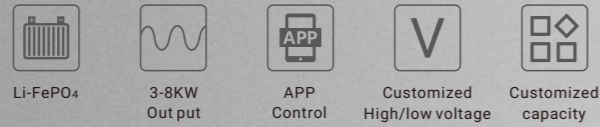
The system is equipped with a self-developed APP, supports IOS/Android mobile phones, remotely controls the charging and discharging of the ESS system, and real-time system operation data. When the system fails, it can be quickly eliminated and the effective power supply can be restored efficiently.

Model	C-ESS-5	C-ESS-10	C-ESS-15	C-ESS-20
Capacity	5.12KWh/5KW	10.24KWh/5KW	15.36KWh/5KW	20.48KWh/5KW
Standard discharge current	50A	50A	50A	50A
Max. discharge current	100A	100A	100A	100A
Working voltage range	43.2-57.6VDC	43.2-57.6VDC	43.2-57.6VDC	43.2-57.6VDC
Standard Voltage	51.2VDC	51.2VDC	51.2VDC	51.2VDC
Max. charging current	50A	50A	50A	50A
Max. charging voltage	57.6V	57.6V	57.6V	57.6V
Rated PV input voltage	360VDC			
MPPT tracking voltage range	120V-450V			
Max input voltage (VOC) at lowest temperature	500V			
Max input power	6000W			
Number of MPPT tracking paths	1Path			
DC input voltage range	42-60VDC			
Rated mains power input voltage	220VAC/230VAC/240VAC			
Grid power input voltage range	170VAC~280VAC (UPS mode) / 120VAC~280VAC (Inverter mode)			
Grid input frequency range	45Hz~55Hz (50Hz); 55Hz~65Hz (60Hz)			
Inverter output efficiency	94%(MAX)			
Inverter output voltage	220VAC±2%/230VAC±2%/240VAC±2%(Inverter mode)			
Inverter output frequency	50Hz±0.5 or 60Hz±0.5(Inverter mode)			
Inverter output waveform	Pure sine wave			
Grid output efficiency	>99%			
Max mains charging current	60A			
Max PV charging current	100A			
Max charging current (Grid+PV)	100A			
Optional mode	Grid priority/PV priority/Battery priority			
Warranty	5~10Years			
Communication	Optional: RS485/RS232/CAN WiFi/4G/Bluetooth			

*Voltage, capacity, size/color customization, OEM/ODM services can be provided according to customer needs

ESS

Stack Lithium Battery Energy Storage System



Model	S-ESS-5	S-ESS-10	S-ESS-15	S-ESS-20
Capacity	5.12KWh/5KW	10.24KWh/5KW	15.36KWh/5KW	20.48KWh/5KW
Standard discharge current	50A	50A	50A	50A
Max. discharge current	100A	100A	100A	100A
Working voltage range	43.2-57.6VDC	43.2-57.6VDC	43.2-57.6VDC	43.2-57.6VDC
Standard Voltage	51.2VDC	51.2VDC	51.2VDC	51.2VDC
Max. charging current	50A	50A	50A	50A
Max. charging voltage	57.6V	57.6V	57.6V	57.6V
Rated PV input voltage	360VDC			
MPPT tracking voltage range	120V-450V			
Max input voltage (VOC) at lowest temperature	500V			
Max input power	6000W			
Number of MPPT tracking paths	1Path			
DC input voltage range	42-60VDC			
Rated mains power input voltage	220VAC/230VAC/240VAC			
Grid power input voltage range	170VAC~280VAC (UPS mode) / 120VAC~280VAC (Inverter mode)			
Grid input frequency range	45Hz~55Hz (50Hz); 55Hz~65Hz (60Hz)			
Inverter output efficiency	94%(MAX)			
Inverter output voltage	220VAC±2%/230VAC±2%/240VAC±2%(Inverter mode)			
Inverter output frequency	50Hz±0.5 or 60Hz±0.5(Inverter mode)			
Inverter output waveform	Pure sine wave			
Grid output efficiency	>99%			
Max mains charging current	60A			
Max PV charging current	100A			
Max charging current (Grid+PV)	100A			
Optional mode	Grid priority/PV priority/Battery priority			
Warranty	5~10Years			
Communication	Optional: RS485/RS232/CAN WiFi/4G/Bluetooth			

*Voltage, capacity, size/color customization, OEM/ODM services can be provided according to customer needs

On/off-grid Solar Inverter



On/off-grid



Pure Sine Wave



MPPT



Communication



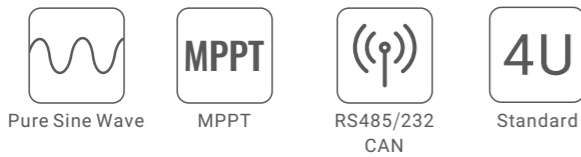
Inverter has the function of segmented charging and discharging, backflow prevention and grid connection function. working without battery under special conditions. lithium battery activation function, which can be triggered by mains or PV. Four charging modes: PV Only, Mains Priority, PV Priority and PV&Mains hybrid charging. Two output modes: mains bypass and inverter output, with UPS function. Adopting full-digital double closed loop control, combined with advanced SPWM. Advanced MPPT technology with efficiency of 99.9%. LCD screen and three LED lights can clearly indicate the status and data. Intelligent and variable-speed fan, efficiently dissipate heat and extend system life. Multiple safety protection functions: short circuit protection, overload protection, reverse polarity protection and so on.

Technical Parameters

PRODUCT BASIC PARAMETERS	
Model	PI Series
Rated power	5500W
Standard battery voltage	Lead-acid Battery or Lithium Battery 48VDC
Battery voltage range	100A
Hybrid charging MAX charging current	40VDC~60VDC ± 0.6VDC(Undervoltage/Shutdown Voltage/Overvoltage /Overvoltage Recovery Warning)
Installation method	Wall mount
PV INPUT PARAMETERS	
MaxPV Open-circuit Voltage	500VDC
PV Working Voltage Range	120-500VDC
MPPT Voltage Range	120-450VDC
Max PV Input Current	22A
Max PV Input Power	600W
Max PV Charging Current	100A
AC INPUT PARAMETERS	
Mains Max Charging Current	60A
Rated Input Voltage	220/260VAC
Input Voltage Range	UPS Mains Mode: (170VAC~280VAC)±2% APL Generator Mode: (90VAC-280VAC)±2%
Frequency	50Hz/ 60Hz (Automatic Detection)
Mains Charging Efficiency	>95%
Switch Time (bypass and inverter)	10ms(Typical Value)
Max Bypass Overload Current	40A
AC OUTPUT PARAMETERS	
Output Waveform	Pure Sine Wave
Rated Output Voltage(VAC)	230VAC 200/208/220/240VAC
Rated Output Power(VA)	6600VA
Rated Output Power(W)	5500W
Peak Power	11000W(1~3s)
On-load Motor Capacity	4HP
Output Frequency Range(Hz)	50Hz±0.3Hz/60Hz±0.3Hz
Maximum Efficiency	>90%
No-load Loss	Non Energy-saving Mode: ≤50W Energy-saving Mode: ≤25W (Manual Setup)
BASIC PARAMETERS	
Working Temperature Range	-25°C ~ 55°C
Storage Temperature Range	-25°C ~ 60°C
Humidity Range	0~100%
Waterproof Grade	IP65
Product Size	556*345*182mm
Product Weight	19.2Kg

Lithium battery Communication

Rack/Cabinet Solar Inverter



PARAMETER		
Model	PC3200	PC5000
Rated power	3200W	5000W
Standard voltage	24VDC	48VDC
Installation	Cabinet/rack installation	
PV PARAMETER		
Working model	MPPT	
Rated PV input voltage	360VDC	
MPPT tracking voltage range	120-450V	
Max input voltage (VOC) at lowest temperature	500V	
Max input power	4000W	6000W
Number of MPPT tracking paths	1 Path	
INPUT		
DC input voltage range	21-30VDC	42-60VDC
Rated mains power input voltage	220/230/240VAC	
Grid power input voltage range	170~280VAC(UPS model)/120~280VAC(inverter model)	
Grid input frequency range	40~55Hz(50Hz) 55~65Hz(60Hz)	
OUTPUT		
Inverter	Output efficiency	94%
	Output voltage	220VAC±2%/230VAC±2%/240VAC±2%(Inverter model)
	Output frequency	50Hz±0.5 or 60Hz±0.5(Inverter model)
Grid	Output efficiency	≥99%
	Output voltage range	Following input
	Output frequency range	Following input
Battery mode no-load loss	≤1%(At rated power)	
Grid mode no-load loss	≤0.5% Rated power(the charger of grid power doesn't work)	
BATTERY		
Battery type	Lead acid battey	Equalizing charging 13.8V Floating charging 13.7V (single battery voltage)
	Customized battery	The parameter can be set according to customers' requirement (Use different types of battery by setting the panel)
Max mains charging current	60A	
Max PV charging current	100A	
Max charging current(Grid+PV)	100A	
Charging method	Three-stage (constant current, constant voltage, float charge)	
PROTECTED MODE		
Battery low voltage range	Battery low voltage protection value +0.5V (Single battery voltage)	
Battery voltage protection	Factory default: 10.5V (Single battery voltage)	
Battery over voltage alarm	Equal charging voltage +0.8V (Single battery voltage)	
Battery over voltage protection	Factory default: 17V (Single battery voltage)	
Battery over voltage recovery Voltage	Battery over voltage protection value -1V (Single battery voltage)	
Overload /short circuit protection	Automatic protection (battery mode), circuit breaker or fuse (Grid mode)	
Temperature protection	≥90°C off output	
PERFORMANCE PARAMETERS		
Conversion time	≤4ms	
Cooling method	Intelligent cooling fan	
Working temperature	-10~40°C	
Storage temperature	-15~60°C	
Altitude	2000m(>2000m altitude need derating)	
Humidity	0~95% (No condensation)	
Product Size	440*495*178mm	440*495*178mm
Package Size	486*370*198mm	526*384*198mm
Net weight	8.5kg	9.5kg
Gross weight	9.5kg	10.5kg



Lithium battery
Communication

Wall-mount Solar Inverter



Pure Sine Wave



MPPT



RS485/232
CAN



Wall-mounted

PARAMETER		
Model	PW3200	PW5000
Rated power	3200W	5000W
Standard voltage	24VDC	48VDC
Installation	Wall mount installation	
PV PARAMETER		
Working model	MPPT	
Rated PV input voltage	360VDC	
MPPT tracking voltage range	120-450V	
Max input voltage (VOC) at lowest temperature	500V	
Max input power	4000W	6000W
Number of MPPT tracking paths	1 Path	
INPUT		
DC input voltage range	21-30VDC	42-60VDC
Rated mains power input voltage	220/230/240VAC	
Grid power input voltage range	170~280VAC(UPS model)/120~280VAC(inverter model)	
Grid input frequency range	40~55Hz(50Hz) 55~65Hz(60Hz)	
OUTPUT		
Inverter	Output efficiency	94%
	Output voltage	220VAC±2%/230VAC±2%/240VAC±2%(Inverter model)
	Output frequency	50Hz±0.5 or 60Hz±0.5(Inverter model)
Grid	Output efficiency	≥99%
	Output voltage range	Following input
	Output frequency range	Following input
Battery mode no-load loss	≤1%(At rated power)	
Grid mode no-load loss	≤0.5% Rated power(the charger of grid power doesn't work)	
BATTERY		
Battery type	Lead acid battey	Equalizing charging 13.8V Floating charging 13.7V (single battery voltage)
	Customized battery	The parameter can be set according to customers' requirement (Use different types of battery by setting the panel)
Max mains charging current	60A	
Max PV charging current	100A	
Max charging current(Grid+PV)	100A	
Charging method	Three-stage (constant current, constant voltage, float charge)	
PROTECTED MODE		
Battery low voltage range	Battery low voltage protection value +0.5V (Single battery voltage)	
Battery voltage protection	Factory default: 10.5V (Single battery voltage)	
Battery over voltage alarm	Equal charging voltage +0.8V (Single battery voltage)	
Battery over voltage protection	Factory default: 17V (Single battery voltage)	
Battery over voltage recovery Voltage	Battery over voltage protection value -1V (Single battery voltage)	
Overload /short circuit protection	Automatic protection (battery mode), circuit breaker or fuse (Grid mode)	
Temperature protection	≥90°C off output	
PERFORMANCE PARAMETERS		
Conversion time	≤4ms	
Cooling method	Intelligent cooling fan	
Working temperature	-10~40°C	
Storage temperature	-15~60°C	
Altitude	2000m(>2000m altitude need derating)	
Humidity	0~95% (No condensation)	
Product Size	420*290*110mm	460*304*110mm
Package Size	486*370*198mm	526*384*198mm
Net weight	8.5kg	9.5kg
Gross weight	9.5kg	10.5kg



Solar Inverter

PLUS+

Lithium battery
Communication

Parallel
Use



Pure Sine Wave



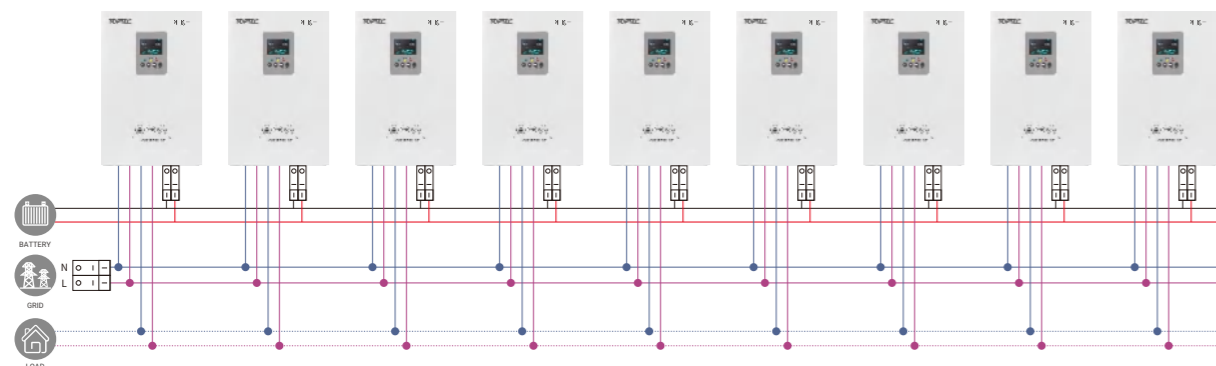
MPPT



RS485/232
CAN



Parallel use



Max 9 parallel Max power 45KW

PARAMETER		
Model	PC 5000plus	PW 5000plus
Rated power	5000W	
Standard voltage	48VDC	
Installation	Cabinet/rack installation	Wall mount installation
PV PARAMETER		
Working model	MPPT	
Rated PV input voltage	360VDC	
MPPT tracking voltage range	120-430V	
Max input voltage (VOC) at lowest temperature	450V	
Max input power	5500W	
Number of MPPT tracking paths	1 Path	
INPUT		
DC input voltage range	42-60VDC	
Rated mains power input voltage	208/220/230/240VAC	
Grid power input voltage range	90~280VAC(UPS model)/170~280VAC(inverter model)	
Grid input frequency range	40~70Hz	
OUTPUT		
Inverter	Output efficiency	94%
	Output voltage	208VAC±2%/220VAC±2%/230VAC±2%/240VAC±2%(Inverter model)
	Output frequency	50Hz±0.5 or 60Hz±0.5(Inverter model)
Grid	Output efficiency	≥99%
	Output voltage range	Following input
	Output frequency range	Following input
Battery mode no-load loss	≤1%(At rated power)	
Grid mode no-load loss	≤0.5% Rated power(the charger of grid power doesn't work)	
BATTERY		
Battery type	Lead acid battey	Equal charging voltage 56.6V Float voltage 54V
	Customized battery	The parameter can be set according to customers' requirement (Use different types of battery by setting the panel)
Max mains charging current	60A	
Max PV charging current	80A	
Max charging current(Grid+PV)	80A	
Charging method	Three-stage (constant current, constant voltage, float charge)	
PROTECTED MODE		
Battery low voltage alarm	Factory default setting: 44V	
Battery low voltage protection	Factory default setting: 42V	
Battery Over voltage Protection	61VDC	
Overload power protection	Automatic protection (battery mode), circuit breaker or fuse (mains mode)	
Inverter output short circuit protection	Automatic protection (battery mode), circuit breaker or fuse (mains mode)	
Temperature protection	≥90°C off output	
PERFORMANCE PARAMETERS		
Parallel quantity	9PCS	
Conversion time	≤4ms	
Cooling method	Intelligent cooling fan	
Working temperature	-10~40°C	
Storage temperature	-15~60°C	
Altitude	2000m(>2000m altitude need derating)	
Humidity	0~95% (No condensation)	
Product Size	420*290*110mm	460*304*110mm
Package Size	486*370*198mm	526*384*198mm
Net weight	8.5kg	9.5kg
Gross weight	9.5kg	10.5kg



PARAMETER	
Model	PP plus
Rated power	5000W
Standard voltage	48VDC
Installation	Wall mount installation

PV PARAMETER	
Working model	MPPT
Rated PV input voltage	360VDC
MPPT tracking voltage range	120-430V
Max input voltage (VOC) at lowest temperature	450V
Max input power	5500W
Number of MPPT tracking paths	1 Path

INPUT	
DC input voltage range	42-60VDC
Rated mains power input voltage	208/220/230/240VAC
Grid power input voltage range	90~280VAC(UPS model)/170~280VAC(inverter model)
Grid input frequency range	40~70Hz

OUTPUT		
Inverter	Output efficiency	94%
	Output voltage	208VAC±2%/220VAC±2%/230VAC±2%/240VAC±2%(Inverter model)
	Output frequency	50Hz±0.5 or 60Hz±0.5(Inverter model)
Grid	Output efficiency	≥99%
	Output voltage range	Following input
	Output frequency range	Following input
Battery mode no-load loss	≤1%(At rated power)	
Grid mode no-load loss	≤0.5% Rated power(The charger of grid power doesn't work)	

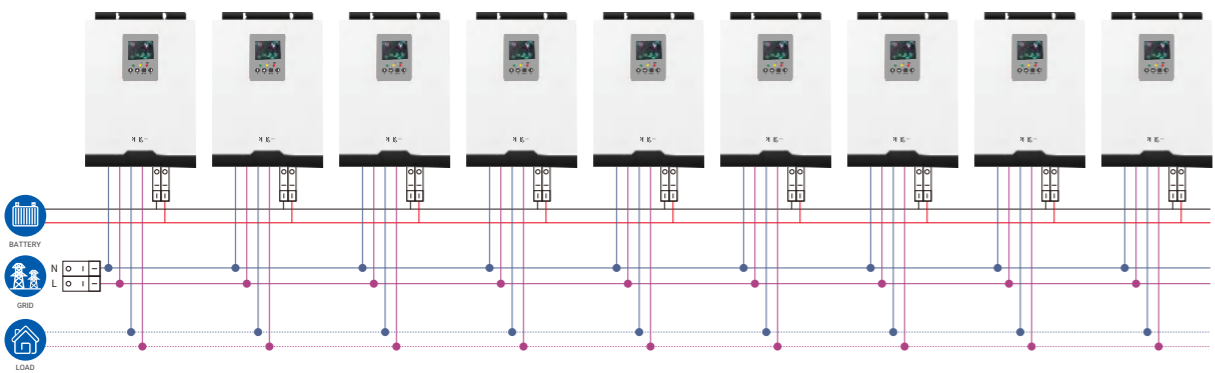
BATTERY		
Battery type	Lead acid battey	Equal charging voltage 56.6V Float voltage 54V
	Customized battery	The parameter can be set according to customers' requirement (Use different types of battery by setting the panel)
Max mains charging current	60A	
Max PV charging current	80A	
Max charging current(Grid+PV)	80A	
Charging method	Three-stage (constant current, constant voltage, float charge)	

PROTECTED MODE	
Battery low voltage alarm	Factory default setting: 44V
Battery low voltage protection	Factory default setting: 42V
Battery Over voltage Protection	61VDC
Overload power protection	Automatic protection (battery mode), circuit breaker or fuse (mains mode)
Inverter output short circuit protection	Automatic protection (battery mode), circuit breaker or fuse (mains mode)
Temperature protection	≥90°C off output

PERFORMANCE PARAMETERS	
Parallel quantity	9PCS
Conversion time	≤4ms
Cooling method	Intelligent cooling fan
Working temperature	-10~40°C
Storage temperature	-15~60°C
Altitude	2000m(>2000m altitude need derating)
Humidity	0~95% (No condensation)
Product Size	440*300*110mm
Package Size	515*375*205mm
Net weight	9.5kg
Gross weight	10.5kg

Solar Inverter

- 
 Pure Sine Wave
- 
 MPPT
- 
 RS485/232
- 
 Parallel use



Max 9 parallel Max power 45KW



PARAMETER								
Model	1000	1500	2000	3200A	3200B	5000A	5000B	7200
Rated power	1000W	1500W	2000W	3200W		5000W		7200W
Standard voltage	12VDC	24VDC				48VDC		
Installation	Wall mount installation							

光伏参数							
Working model	MPPT						
Rated PV input voltage	15-80VDC	30-100VDC		120-450VDC	60-160VDC	120-500VDC	
MPPT tracking voltage range	15-30VDC	30-60VDC		360VDC	60-90VDC	360VDC	
Max input voltage (VOC) at lowest temperature	120VDC			500VDC	180VDC	500VDC	
Max input power	840W	1680W		4000W	3360W	6000W	9000W
Number of MPPT tracking paths	1 Path					2 Path	

INPUT			
DC input voltage range	21-30VDC		42-60VDC
Rated mains power input voltage	220/230/240VAC		
Grid power input voltage range	170~280VAC(UPS Mode)/120~280VAC(Inverter Mode)		
Grid input frequency range	45~55(50Hz) 55~65Hz(60Hz)		

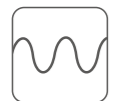
OUTPUT			
Inverter	Output efficiency	94%	
	Output voltage	220VAC±2%/230VAC±2%/240VAC±2%	
	Output frequency	50Hz±0.5 or 60Hz±0.5	
Grid	Output efficiency	>99%	
	Output voltage range	Following input	
	Output frequency range	Following input	
Battery mode no-load loss	≤1%(At rated power)		
Grid mode no-load loss	≤0.5% Rated power(The charger of grid power doesn't work)		

BATTERY								
Battery type	Lead acid battey	Equal charging voltage 56.6V Float voltage 54V						
	Customized battery	The parameter can be set according to customers' requirement(Use different types of battery by setting the panel)						
Max mains charging current	120A	100A	110A	120A	100A	120A	120A	150A
Max PV charging current	60A	60A	60A	60A	100A	60A	100A	150A
Max charging current(Grid+PV)	60A	40A	50A	60A	60A	60A	60A	80A
Charging method	Three-stage (constant current, constant voltage, float charge)							

PROTECTED MODE	
Battery low voltage alarm	Battery low voltage protection value +0.5V (Single battery voltage)
Battery voltage protection	Factory default: 10.5V (Single battery voltage)
Battery over voltage alarm	Equal charging voltage +0.8V (Single battery voltage)
Battery over voltage protection	Factory default: 17V (Single battery voltage)
Battery over voltage recovery	Battery over voltage protection value -1V (Single battery voltage)
Overload/short circuit protection	Automatic protection (Battery mode), circuit breaker or fuse (Grid mode)
Temperature protection	≥90°C off output

PERFORMANCE PARAMETERS				
Conversion time	≤10ms			
Cooling method	Intelligent cooling fan			
Working temperature	-10~40°C			
Storage temperature	-15~60°C			
Altitude	2000m(>2000m altitude need derating)			
Humidity	0~95% (No condensation)			
Product Size	355*272*91.5mm	400*315*101mm	440*342*101mm	525*352*115mm
Package Size	443*350*187mm	488*393*198mm	528*420*198mm	615*435*210mm
Net weight	6.5kg	8.2kg	10kg	14kg
Gross weight	7.5kg	9.5kg	11kg	15.5kg

Solar Inverter



Pure Sine Wave



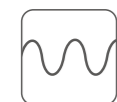
MPPT



RS485/232



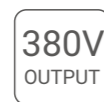
Three-phase Low Frequency Inverter



Pure Sine Wave



MPPT



380V
OUTPUT



RS485/232

Model:	32248/96/192	48248/96/192	56248/96/192	64248/96/192	80248/96/192	10348/96/192	12348/96/192	16396/192	20396/192	24396/192	
Rated Power	4KVA/3.2KW	6KVA/4.8KW	7KVA/5.6KW	8KVA/6.4KW	10KVA/8KW	12.5KVA/10KW	15KVA/12KW	20KVA/16KW	25KVA/20KW	30KVA/24KW	
Peak Power(20ms)	9.6KVA	14.4KVA	16.8KVA	19.2KVA	24KVA	30KVA	36KVA	48KVA	60KVA	72KVA	
Start Motor	3HP	4HP	4HP	4HP	5HP	6HP	7HP	10HP	10HP	15HP	
Battery Voltage	48/96/192VDC							96/192VDC			
Built-in solar controller charging current (Optional)	PWM:10A-60A(48V System);50A/100A(96V System);50A(192V System) MPPT:10A-100A(48V System);50A/100A(96V System)					PWM: 50A/100A (96V System); 50A/100A (192V System) MPPT: 50A/100A (96V System)					
Size(L*W*Hmm)	565*300*775						725*365*1010				
Package Size(L*W*Hmm)	625*360*895						785*425*1135				
N.W.(kg)	65	73	75	80	112	122	134	160	176	189	
G.W.(kg)(Wooden Packing)	78	86	88	93	136	146	158	184	200	213	
Installation Method	Tower										
Model:	323192	403192	483384	643384	803384	963384	1003384	1203384	1283384	1503384	1603384
Rated Power	40KVA/32KW	50KVA/40KW	60KVA/48KW	80KVA/64KW	100KVA/80KW	120KVA/96KW	125KVA/100KW	150KVA/120KW	160KVA/128KW	190KVA/150KW	200KVA/160KW
Peak Power(20ms)	96KVA	120KVA	144KVA	192KVA	240KVA	288KVA	300KVA	360KVA	384KVA	450KVA	480KVA
Start Motor	15HP	20HP	25HP	30HP	40HP	50HP	50HP	60HP	60HP	80HP	80HP
Battery Voltage	192VDC					384VDC					
Built-in solar controller charging current (Optional)	PWM:100A-200A(192V/384V System) MPPT:50A/100A(192V/384V System)					PWM: 100A-200A / MPPT: 50A/100A					
Size(L*W*Hmm)	720*575*1275					875*720*1380				1123*900*1605	
Package Size(L*W*Hmm)	785*640*1400					980*825*1560				1185*960*1750	
N.W.(kg)	240	260	290	308	512	542	552	612	642	705	755
G.W.(kg)(Wooden Packing)	273	293	323	341	552	582	592	652	692	755	805
Installation Method	Tower										
Input	DC Input Voltage Range	10.5-15VDC (Single battery voltage)									
	AC Input Voltage Range	380Vac/400Vac -85%~+120%(customized 190Vac/200Vac)									
	AC Input Frequency Range	45Hz-55Hz (50Hz) / 55Hz-65Hz (60Hz)									
	Max AC charging current	0~45A (Depending on the model)									
	AC charging method	Three-stage (constant current, constant voltage, floating charge)									
Output	Phase	3/N/PE									
	Efficiency(Battery Mode)	≥85%									
	Output Voltage(Battery Mode)	380Vac/400Vac±2%(customized 190Vac/200Vac)									
	Output Frequency(Battery Mode)	50/60Hz±1%									
	Output Wave(Battery Mode)	Pure Sine Wave									
	Output waveform distortion	Linear load≤3%									
	Efficiency(AC Mode)	>99%									
	Output Voltage(AC Mode)	Conforming to AC input									
	Output Frequency(AC Mode)	Conforming to AC input									
	No load loss(Battery Mode)	≤2.5% rated power (4KVA-30KVA models) ; ≤1% rated power (40KVA-200KVA models)									
No load loss(AC Mode)	≤2% rated power(charger does not work in AC mode)										
No load loss(Energy saving Mode)	≤10W										
Phase	3/N/PE										
Battery Type	URLA Battery	Charge Voltage :13.8V; Float Voltage:13.7V (Single battery voltage)									
	Customize battery	Charging and discharging parameters of different types of batteries can be customized according to user requirements (charging and discharging parameters of different types of batteries can be set through the operation panel)									
Protection	Battery undervoltage alarm	11V (Single battery voltage)									
	Battery undervoltage protection	10.5V (Single battery voltage)									
	Battery overvoltage alarm	15V (Single battery voltage)									
	Battery overvoltage protection	17V (Single battery voltage)									
	Battery overvoltage recovery voltage	14.5V (Single battery voltage)									
	Overload power protection	Automatic protection (battery mode), circuit breaker or insurance (AC mode)									
Inverter output short circuit protection	Automatic protection (battery mode), circuit breaker or insurance (AC mode)										
Temperature protection	>90°C (Shut down output)										
Alarm	A	Normal working condition, buzzer has no alarm sound									
	B	Buzzer sounds 4 times per second when battery failure, voltage abnormality, overload protection									
	C	When the machine is turned on for the first time, the buzzer will prompt 5 when the machine is normal									
Inside Solar controller (Optional)	Charging Mode	MPPT or PWM									
	Charging current	PWM: 10A/20A/30A/40A/50A/60A(48V System); 50A/100A/150A/200A(96V/192V/384V System) MPPT: 10A/20A/30A/40A/50A/60A/80A/100A(48V System); 50A/100A(96V/192V/384V System)									
	PV Input Voltage Range	PWM: 60V-88V(48V System); 120V-176V(96V System); 240V-352V(192V System); 480V-704V(384V System) MPPT: 60V-120V(48V System); 120V-240V(96V System); 240V-360V(192V System); 480V-640V(384V System)									
	Max PV Input Voltage(Voc) (At the lowest temperature)	PWM: 100V(48V System); 200V(96V System); 400V(192V System); 750V(384V System) MPPT: 150V(48V System); 300V(96V System); 450V(192V System); 800V(384V System)									
	PV Array Maximum Power	48V System: 560W(10A)/1120W(20A)/1680W(30A)/2240W(40A)/2800W(50A)/3360W(60A) 96V System: (PWM: 5.6KW(50A)/11.2KW(100A)) / (MPPT: 5.6KW(50A)/5.6KW*2(100A)); 192V System: (PWM: 11.2KW(50A)/22.4KW(100A)/16.8KW*2(150A)/22.4KW*2(200A)) / (MPPT: 11.2KW(50A)/11.2KW*2(100A)); 384V System: (PWM: 22.4KW(50A)/44.8KW(100A)/33.6KW*2(150A)/44.8KW*2(200A)) / (MPPT: 22.4KW(50A)/22.4KW*2(100A))									
	Standby loss	≤3W									
Maximum conversion efficiency	>95%										
Working Mode	Battery First/AC First/Saving Energy Mode										
Transfer Time	≤4ms										
Display	LCD										
Thermal method	Forced air cooling										
Communication(Optional)	RS485/APP (WIFI monitoring or GPRS monitoring)										
Environment	Operating temperature	-10°C~40°C									
	Storage temperature	-15°C~60°C									
	Noise	≤65dB									
	Elevation	2000m (More than derating)									
Humidity	0%~95% (No condensation)										
Warranty	1 year										

Note: 1. Specifications are subject to change without prior notice; 2. Special voltage and power requirements can be customized according to the actual situation of users.



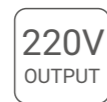
Single-phase Low Frequency Inverter



Pure Sine Wave



MPPT



Single-phase



RS485/232

Model:	70112/24 (701)	10212/24 (102)	15224/48 (152)	20224/48 (202)	30224/48 (302)	35248/96 (352)	40248/96 (402)	50248/96 (502)	60248/96 (602)	70248/96/192 (702)	
Rated Power	700W	1000W	1500W	2000W	3000W	3500W	4000W	5000W	6000W	7000W	
Peak Power (20ms)	2100VA	3000VA	4500VA	6000VA	9000VA	10500VA	12000VA	15000VA	18000VA	21000VA	
Start Motor	0.5HP	1HP	1.5HP	2HP	3HP	3HP	3HP	4HP	4HP	5HP	
Battery Voltage	12/24VDC	12/24VDC	24/48VDC	24/48VDC	24/48VDC	48/96VDC	48/96VDC	48/96VDC	48/96VDC	48/96/192VDC	
Max AC charging current	0A~20A (Depending on the model, The maximum charging power is 1/4 of the rated power)										
Built-in solar controller charging current (optional)	10A~60A(PWM or MPPT)			24/48V(PWM:10A~60A/MPPT:10A-100A)			48V(PWM:10A~120A/MPPT:10A~100A) / 96V(50A/100A(PWM or MPPT))				
Size(L*W*H:mm)	340x165x283				410x200x350			491x260x490			
Packing Size(L*W*H:mm)	405x230x340(1pc) / 475x415x350(2pc)				475x265x410			545x315x550			
N.W.(kg)	9.5(1pc)	10.5(1pc)	11.5(1pc)	17	20.5	21.5	29	30	31.5	36	
G.W.(kg) (Carton packaging)	11(1pc)	12(1pc)	13(1pc)	19	22.5	23.5	32	33	34.5	39	
Installation Method	Tower										
Model:	80248/96/192 (802)	10348/96/192 (103)	12396/192 (123)	153192 (153)	203192 (203)	253240 (253)	303240 (303)	403384 (403)			
Rated Power	8KW	10KW	12KW	15KW	20KW	25KW	30KW	40KW			
Peak Power (20ms)	24KVA	30KVA	36KVA	45KVA	60KVA	75KVA	90KVA	120KVA			
Start Motor	5HP	7HP	7HP	10HP	12HP	15HP	15HP	20HP			
Battery Voltage	48/96/192VDC	48/96V/192VDC	96/192VDC	192VDC	192VDC	240VDC	240VDC	384VDC			
Max AC charging current	0A~40A (Depending on the model, The maximum charging power is 1/4 of the rated power)			0A~20A (Depending on the model, The maximum charging power is 1/4 of the rated power)							
Built-in solar controller charging current (optional)	PWM:48V: 120A; 96V:50A/100A; 192V:384V/50A MPPT:48V:100A/200A; 96V:50A/100A; 192V:384V/50A			50A/100A			50A/100A				
Size(L*W*H:mm)	540x350x695			593x370x820			721x400x1002				
Packing Size(L*W*H:mm)	600*410*810			656*420*937			775x465x1120				
N.W.(kg)	66	70	77	110	116	123	167	192			
G.W.(kg) (Wooden packing)	77	81	88	124	130	137	190	215			
Installation Method	Tower										
Input	DC Input Voltage Range	10.5-15VDC (Single battery voltage)									
	AC Input Voltage Range	73VAC~138VAC(110VAC)/83VAC~148VAC(120VAC)/145VAC~275VAC(220VAC)/155VAC~285VAC(230VAC)/165VAC~295VAC(240VAC)(700W~7000W) 92VAC~128VAC(110VAC)/102VAC~138VAC(120VAC)/185VAC~255VAC(220VAC)/195VAC~265VAC(230VAC)/205VAC~275VAC(240VAC)(8KW~40KW)									
	AC Input Frequency Range	45Hz~55Hz (50Hz) / 55Hz~65Hz (60Hz)									
	AC charging method	Three-stage (constant current, constant voltage, floating charge)									
Output	Efficiency(Battery Mode)	≥85%									
	Output Voltage(Battery Mode)	110VAC±2% / 120VAC±2% / 220VAC±2% / 230VAC±2% / 240VAC±2%									
	Output Frequency(Battery Mode)	50Hz±0.5 or 60Hz±0.5									
	Output Wave(Battery Mode)	Pure Sine Wave									
	Efficiency(AC Mode)	≥99%									
	Output Voltage(AC Mode)	110VAC±10%/120VAC±10%/220VAC±10%/230VAC±10%/240VAC±10%(For models below or equal to 7KW); Follow input (For models above 7KW)									
	Output Frequency(AC Mode)	Follow input									
	Output waveform distortion(Battery Mode)	≤3% (Linear load)									
	No load loss(Battery Mode)	≤1% rated power									
	No load loss(AC Mode)	≤2% rated power (charger does not work in AC mode)									
No load loss(Energy saving Mode)	≤10W										
Battery Type (selectable)	VRLA Battery	Charge Voltage :14.2V; Float Voltage:13.8V(Single battery voltage)									
	Customize battery	Charging and discharging parameters of different types of batteries can be customized according to user requirements (charging and discharging parameters of different types of batteries can be set through the operation panel)									
Protection	Battery undervoltage alarm	Factory default: 11V (Single battery voltage)									
	Battery undervoltage protection	Factory default: 10.5V (Single battery voltage)									
	Battery overvoltage alarm	Factory default: 15V (Single battery voltage)									
	Battery overvoltage protection	Factory default: 17V (Single battery voltage)									
	Battery overvoltage recovery voltage	Factory default: 14.5V (Single battery voltage)									
	Overload power protection	Automatic protection (battery mode), circuit breaker or insurance (AC mode)									
	Inverter output short circuit protection	Automatic protection (battery mode), circuit breaker or insurance (AC mode)									
Temperature protection	>90°C (Shut down output)										
Alarm	A	Normal working condition, buzzer has no alarm sound									
	B	Buzzer sounds 4 times per second when battery failure, voltage abnormality, overload protection									
	C	When the machine is turned on for the first time, the buzzer will prompt 5 when the machine is normal									
Inside Solar controller (Optional)	Charging Mode	PWM or MPPT									
	PV Input Voltage Range	PWM: 15V-44V(12V system); 30V-44V(24V system); 60V-88V(48V system);120V-176V(96V system); 240V-352V(192V system); 300V-400V(240V system); 480V-704V(384V system) MPPT: 15V-120V(12V system); 30V-120V(24V system); 60V-120V(48V system);120V-240V(96V system); 240V-360V(192V system); 300V-400V(240V system);480V-640V(384V system)									
	Max PV Input Voltage(Voc) (At the lowest temperature)	PWM: 50V(12V/24V system); 100V(48V system); 200V(96V system); 400V(192V system); 500V(240V system);750V(384V system) MPPT: 150V(12V/24V/48V system); 300V(96V system); 450V(192V system); 500V(240V system);800V(384V system)									
	PV Array Maximum Power	12V system: 140W(10A)/280W(20A)/420W(30A)/560W(40A)/700W(50A)/840W(60A)/1120W(80A)/1400W(100A); 24V system: 280W(10A)/560W(20A)/840W(30A)/1120W(40A)/1400W(50A)/1680W(60A)/2240W(80A)/2800W(100A); 48V system: 560W(10A)/1120W(20A)/1680W(30A)/2240W(40A)/2800W(50A)/3360W(60A)/4480W(80A)/5600W(100A)/6720W(PWM 120A)/5.6KW/8*11.2KW(MPPT 100A/200A); 96V system: 5.6KW(50A)/11.2KW(100A); 192V system: (PWM:11.2KW(50A)/22.4KW(100A)) / (MPPT:11.2KW(50A)/11.2*2KW(100A)); 240V system: (PWM:14KW(50A)/28KW(100A)) / (MPPT:14KW(50A)/14*2KW(100A)); 384V system: (PWM:22.4KW(50A)/44.8KW(100A)) / (MPPT:22.4KW(50A)/22.4*2KW(100A))									
	Standby loss	≤3W									
	Maximum conversion efficiency	>95%									
Working Mode	Battery First/AC First/Saving Energy Mode										
Transfer Time	≤4ms										
Display	LCD										
Thermal method	Cooling fan in intelligent control										
Communication(Optional)	RS485/APP (WIFI monitoring or GPRS monitoring)										
Environment	Operating temperature	-10°C~40°C									
	Storage temperature	-15°C~60°C									
	Noise	≤55dB									
	Elevation	2000m (More than derating)									
	Humidity	0%~95% ,No condensation									
Warranty	1 year										

Note: 1. Specifications are subject to change without prior notice; 2. Special voltage and power requirements can be customized according to the actual situation of users.

Portable Outdoor Power Supply

600W 576Wh



Portable mobile power supply is a portable energy storage power supply that integrates multiple functions. It has built-in high-performance A-grade lithium iron phosphate batteries, high-quality BMS management system, and high-efficiency inverter conversion circuit. It can be used as a home, office, outdoor camping and emergency backup power supply. Mains or solar power available charging, can provide rated 220V/600W AC output, 5V/12V DC output, USB output, Type C, wireless output.

- Small, light weight, convenient
- Pure sine wave output,
- 0.3S quick start, High efficiency
- Support QC3.0 fast charging, support PD18-100W fast charging, 15W wireless charging
- LCD display, visualization of operating data

Model	600				
Rated Capacity	576WH				
Rated power	600W				
Charge and discharge parameters					
Operating temperature	0°C~40°C (Charge) -10°C~40°C(Discharge)				
Support charging type	Grid charging/Solar charging				
Input voltage range	Grid input 100V/solar input 20V				
Input voltage	Grid input 100V/Solar input 20V				
Charging voltage	12V				
AC Max charging current	50V/5A				
Max charging power	100W				
Output type	AC	USB	Type-C	DC	Wireless charging
Output rated power	600W	QC3.0 18W	100W MAX	100W	15W
Frequency	50Hz/60 Hz±1HZ(Auto)				
Output voltage/current	110~230V/10A	5V/2.4A,5V/3A	5~20V/3.25A	12.5V 8A	12V/1.25A

Product Features

Cooling method	cooling fan
Running noise	≤5dB
Protection	IP53
Working humidity	65±20%RH
Storage humidity	65±20%RH

Product Information

Product Size	265*200*195mm
Package Size	365*325*298mm
Net weight	4.9kg
Gross weight	6.5kg
Packing	Carton

Protection



Low voltage Protection



Over voltage Protection



Over current Protection



Over temperature Protection



Balanced Protection



Over discharge Protection



Short circuit Protection

Customized sockets



Multifunction



U.S.



GFCI



Australia



U.K.



Lsrael



Switzerland



France



Germany



Japan



SouthAfrica

Portable Outdoor Power Supply

1200W 1008Wh



Portable mobile power supply is a portable energy storage power supply that integrates multiple functions. It has built-in high-performance A-grade lithium iron phosphate batteries, high-quality BMS management system, and high-efficiency inverter conversion circuit. It can be used as a home, office, outdoor camping and emergency backup power supply. Mains or solar power available charging, can provide rated 220V/1200W AC output, 5V/12V DC output, USB output, Type C, wireless output.

- Small, light weight, convenient
- Pure sine wave output,
- 0.3S quick start, High efficiency
- Support QC3.0 fast charging, support PD18-65W fast charging, 15W wireless charging
- LCD display, visualization of operating data

Model	1200				
Rated Capacity	1008WH				
Rated power	1200W				
Charge and discharge parameters					
Operating temperature	0°C~40°C (Charge) -10°C~40°C(Discharge)				
Support charging type	Grid charging/Solar charging				
Input voltage range	Grid input 100V/solar input 20~40V				
Input voltage	Grid input 100V/Solar input 20~40V				
Charging voltage	16.8V				
AC Max charging current	100V/10A				
Max charging power	550W				
Output type	AC	USB	Type-C	DC	Wireless charging
Output rated power	1200W	QC3.0 18W	65W MAX	100W	15W
Frequency	50Hz/60 Hz±1HZ(Auto)				
Output voltage/current	110~230V/10A	5V/2.4A,5V/3A	5~20V/3.25A	12.5V 8A	12V/1.25A

Product Features					
Cooling method	Cooling fan				
Running noise	≤5dB				
Protection	IP53				
Working humidity	65±20%RH				
Storage humidity	65±20%RH				

Product Information					
Product Size	370*245*275mm				
Package Size	455*325*368mm				
Net weight	13kg				
Gross weight	15kg				
Packing	Carton				

Protection



Low voltage Protection



Over voltage Protection



Over current Protection



Over temperature Protection



Balanced Protection



Over discharge Protection



Short circuit Protection

Customized sockets



Multifunction



U.S.



GFCI



Australia



U.K.



Lsrael



Switzerland



France



Germany



Japan



SouthAfrica



2000-3000 PRO

Portable Outdoor Power Supply

Portable mobile power supply is a portable energy storage power supply that integrates multiple functions. It has built-in high-performance A-grade lithium iron phosphate batteries, high-quality BMS management system, and high-efficiency inverter conversion circuit. It can be used as a home, office, outdoor camping and emergency backup power supply. Mains or solar power available charging, can provide rated 220V/3200W AC output, 5V/12V DC output, USB output, Type C, wireless output.

- Large capacity, High power
- Pure sine wave output,
- 0.3S quick start, High efficiency
- Support QC3.0 fast charging, support PD18-65W fast charging, 15W wireless charging
- LCD display, visualization of operating data

Model	2000 PRO	3000 PRO
Rated Capacity	2016Wh	3000WH
Rated power	2000W	3200W

Charge and discharge parameters					
Operating temperature	0°C~40°C (Charge) -10°C~40°C(Discharge)				
Support charging type	Grid charging/Solar charging				
Input voltage range	Grid input 85-250V/solar input 26~60V				
Input voltage	Grid input 250V/Solar input 26~60V				
Charging voltage	16.8V				
AC Max charging current	100V/10A				
Max charging power	1000W				
Output type	AC	USB	Type-C	DC	Wireless charging
Output rated power	2000~3200W	QC3.0 18W	65W MAX	100W	15W
Frequency	50Hz/60 Hz±1HZ(Auto)				
Output voltage/current	110~230V/10A	5V/2.4A,5V/3A	5~20V/3.25A	12.5V 8A	12V/1.25A

Product Features	
Cooling method	Cooling fan
Running noise	≤5dB
Protection	IP53
Working humidity	65±20%RH
Storage humidity	65±20%RH

Product Information	
Product Size	400*300*322mm
Package Size	435*355*352mm
Net weight	28kg
Gross weight	32kg
Packing	Carton

Protection



Low voltage Protection



Over voltage Protection



Over current Protection



Over temperature Protection



Balanced Protection



Over discharge Protection



Short circuit Protection

Customized sockets



Multifunction



U.S.



GFCI



Australia



U.K.



Lsrael



Switzerland



France



Germany



Japan



SouthAfrica



Power Supply

3-5KW 3-5KWh

- Large capacity, High power
- Pure sine wave output,
- LCD display, visualization of operating data

PARAMETER		
Model	3000	5000
Rated power	3200W	5000W
Capacity	3KWh	5.12KWh
PV PARAMETER		
Working model	MPPT	
Rated PV input voltage	360VDC	
MPPT tracking voltage range	120-450V	
Max input voltage (VOC) at lowest temperature	500V	
Max input power	4000W	6000W
Number of MPPT tracking paths	1 Path	
INPUT		
DC input voltage range	21-30VDC	42-60VDC
Rated mains power input voltage	220/230/240VAC	
Grid power input voltage range	170~280VAC(UPS model)/120~280VAC(inverter model)	
Grid input frequency range	40~55Hz(50Hz) 55~65Hz(60Hz)	
OUTPUT		
Inverter	Output efficiency	94%
	Output voltage	220VAC±2%/230VAC±2%/240VAC±2%(Inverter model)
	Output frequency	50Hz±0.5 or 60Hz±0.5(Inverter model)
Grid	Output efficiency	≥99%
	Output voltage range	Following input
	Output frequency range	Following input
Battery mode no-load loss	≤1%(At rated power)	
Grid mode no-load loss	≤0.5% Rated power(the charger of grid power doesn't work)	
BATTERY		
Battery type	Lead acid battey	Equalizing charging 13.8V Floating charging 13.7V (single battery voltage)
	Customized battery	The parameter can be set according to customers' requirement (Use different types of battery by setting the panel)
Max mains charging current	60A	
Max PV charging current	80A	
Max charging current(Grid+PV)	80A	
Charging method	Three-stage (constant current, constant voltage, float charge)	
PROTECTED MODE		
Battery low voltage alarm	Factory default setting: 44V	
Battery low voltage protection	Factory default setting: 42V	
Battery Over voltage Protection	61VDC	
Overload power protection	Automatic protection (battery mode), circuit breaker or fuse (mains mode)	
Inverter output short circuit protection	Automatic protection (battery mode), circuit breaker or fuse (mains mode)	
Temperature protection	≥90°C off output	
PERFORMANCE PARAMETERS		
Conversion time	≤4ms	
Cooling method	Intelligent cooling fan	
Working temperature	-10~40°C	
Storage temperature	-15~60°C	
Altitude	2000m(>2000m altitude need derating)	
Humidity	0~95% (No condensation)	
Product Size	500*300*340mm	500*300*340mm
Package Size	600*400*440mm	600*400*440mm
Net weight	42kg	55kg
Gross weight	48kg	65kg